



Apogee Quartet

QuickStart Guide

V1, February, 2013



Contents

Overview	5
Introduction	5
Package Contents	6
Quartet Panel Tour	8
Display and Touchpad Tour	10
Connecting to your Mac	12
System Requirements	12
Install Quartet Software	12
Connect to Headphones or Speakers	13
Configuring the Input	14
Connecting to your iPad.....	16
System Requirements	16
Install Maestro from App Store	17
Connect to Headphones or Speakers	18
Configuring the Input	19
Adjusting Input & Output Levels	22
Software Setup	26
Using Quartet with iOS Apps	34
Additional Support.....	35

Overview

Introduction

Thank you for purchasing Quartet. This QuickStart guide describes how to set up Quartet with your Mac and iPad, connect speakers or headphones to play back music and connect mics and instruments to record your own creations.

Quartet

Professional audio interface and studio control center for iPad and Mac

Apogee Quartet is a professional USB audio interface designed to deliver the ultimate desktop recording experience to the iPad and Mac-based studio. Featuring 4 inputs and 8 outputs of Apogee's industry-leading AD/DA conversion technology as well as 4 world-class mic preamps, Quartet bridges the gap between the 2-channel Apogee Duet and Apogee's flagship interface, Symphony I/O.

Package Contents

The following items are included in the Quartet box:

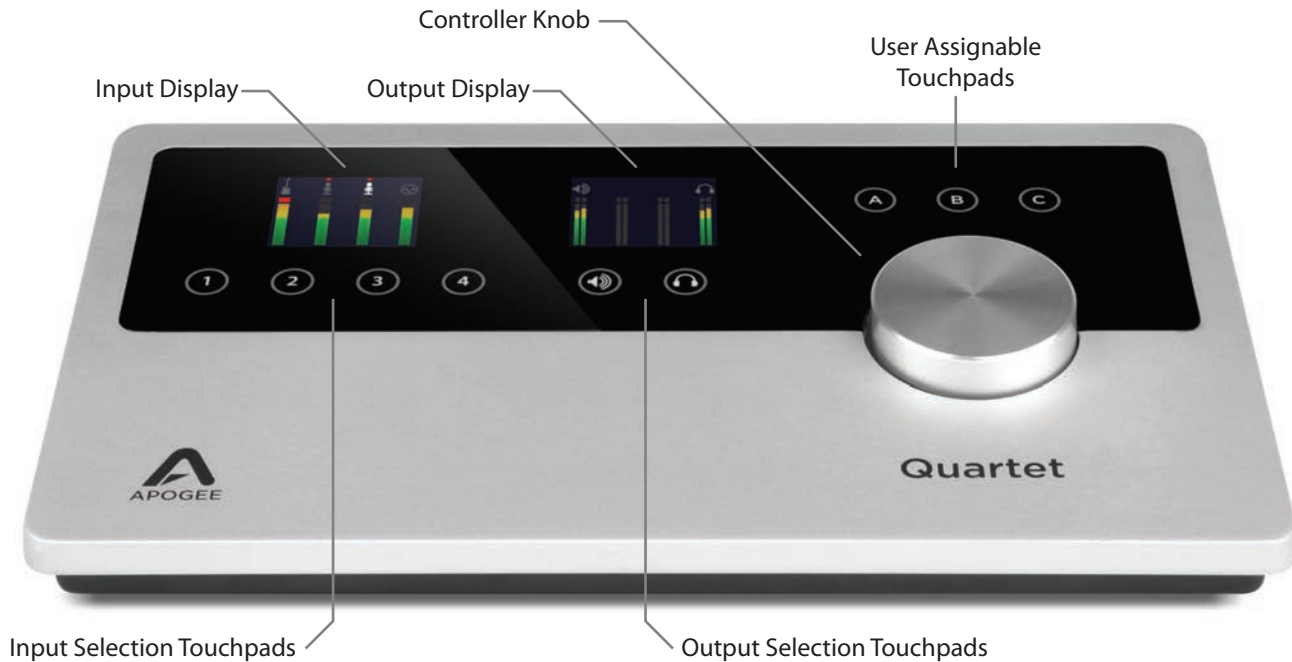
- Quartet
- 2 meter USB cable
- 30-pin iOS cable
- Universal Power Supply with standard 3 pin-IEC cable
- QuickStart Guide

Software, firmware and the Quartet User's Guide are available online only. Please register your product and download the latest installer here:

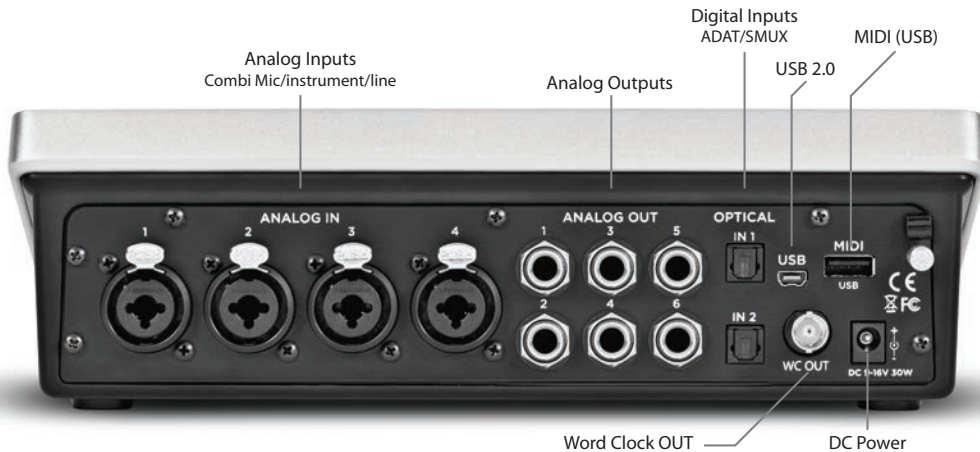
<http://www.apogeedigital.com/>



Quartet Panel Tour

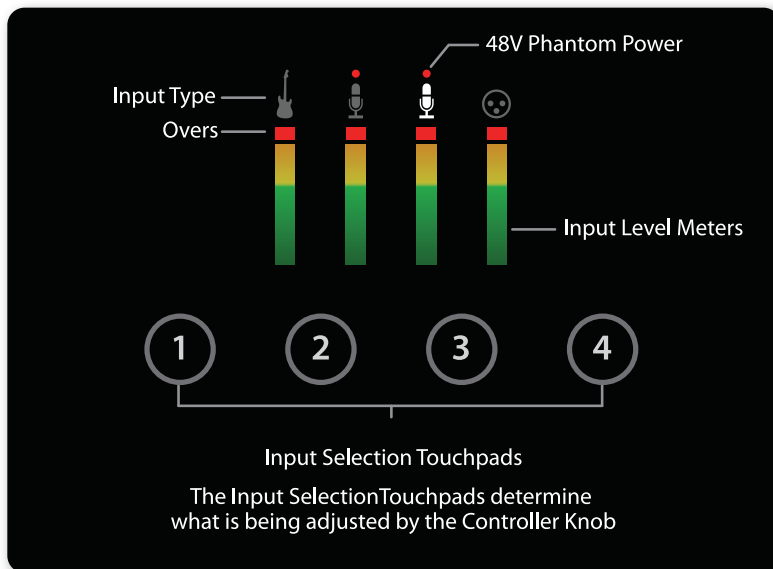


Overview - Apogee Quartet QuickStart Guide

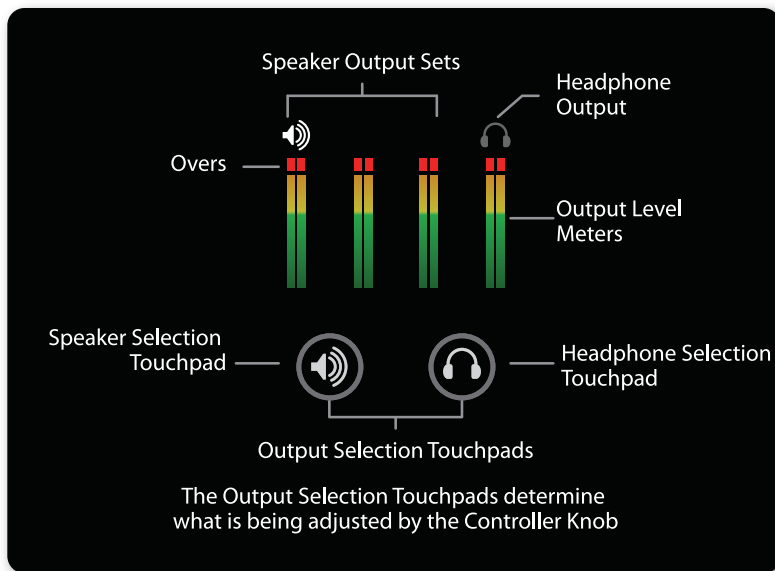


Display and Touchpad Tour

Input Display and Touchpads



Output Display and Touchpads



Connecting to your Mac

System Requirements

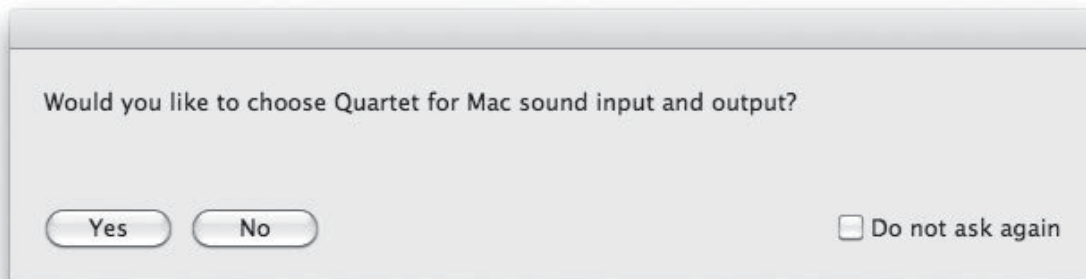
- Computer: Intel Mac 1.5GHz or faster
- Memory: 2 GB RAM minimum, 4 GB recommended
- Mac OS X 10.6.8, 10.7.4 or greater
- Connection: Any available USB port on a Mac
- Power: DC Power supply included

Install Quartet Software

1. Connect Quartet's Power Supply to the DC power input on the rear panel of Quartet and the appropriate IEC cable to a wall outlet.
2. Connect Quartet's USB port to a USB port on your Mac using the supplied USB 2.0 cable.
3. Go to <http://www.apogeedigital.com/downloads>
4. Download the latest Quartet software installer.
5. Once you have downloaded the package, double-click the Apogee icon to run the firmware updater.
6. After the firmware update has completed, double-click the open-box icon to run the software installer.
7. You will be required to restart your computer after the install is complete.

Choosing Quartet for Mac Sound I/O

After connecting Quartet, installing the software and restarting your Mac, a dialog box will prompt you to choose Quartet for Mac sound input and output. **Click Yes.**



Connect to Headphones or Speakers

Connect headphones to the headphone output on the right side of Quartet.

Connect Quartet's 1/4" speaker outputs 1-2 to the inputs (balanced or unbalanced) of your studio monitors or amplifier.

Configuring the Input

Connect a microphone or instrument to one of the combo jacks on Quartet's rear panel

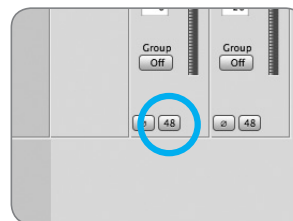


Connecting to your Mac - Apogee Quartet QuickStart Guide

Open Apogee Maestro software (found in your Mac's Applications folder), and select the Input tab.



Select the Analog Level setting that corresponds to the device you have connected to Quartet's input(s). For example, if you have an XLR microphone connected to input 1, select "Mic" from the Analog Level menu on channel 1. If you have a 1/4" instrument connected to the input, then select "Inst"



48V Phantom power button in Maestro



48V Phantom power indicator on OLED Display

Note: If you are using a condenser microphone that requires phantom power, select the 48V box on the Input tab of the appropriate channel in Maestro. Phantom power is indicated on Quartet's display by a red dot above the microphone icon.

Connecting to your iPad

System Requirements

- iPhone 4, iPhone 4S, iPad, iPad 2, iPad (3rd gen.)
 - Connection: 30-pin dock connector
- iPod Touch (5th gen.), iPhone 5, iPad (4th gen.), iPad Mini
 - Connection: Apple's Lightning to 30-pin adapter (sold separately)
- iOS version: 5.1.1 or greater
- DC power required: DC power supply included

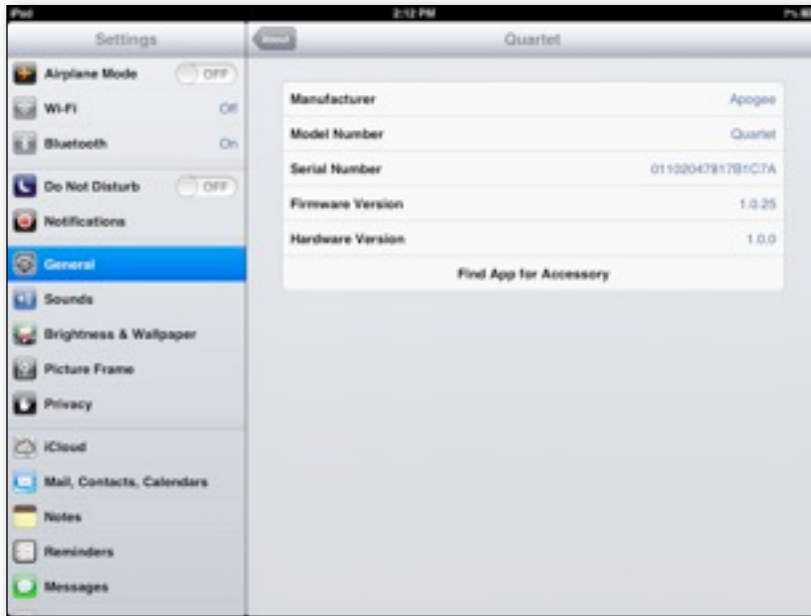
Note: Firmware update must be done from a Mac running OS X 10.6.8, 10.7.4 or greater

Update Firmware from Mac

1. Connect Quartet's Power Supply to the DC power input on the rear panel of Quartet and the appropriate IEC cable to a wall outlet.
2. Connect Quartet's USB port to a USB port on your Mac using the supplied USB 2.0 cable.
3. Go to <http://www.apogeedigital.com/downloads>
4. Download the latest Quartet software installer.
5. Once you have downloaded the package, double-click the Apogee icon to run the firmware updater.

Install Maestro from App Store

1. Connect Quartet to your iPad/iPhone using the provided 30-pin iOS cable.
2. On the iPad/iPhone, open Settings and choose General > About > Quartet, then choose "Find App for Accessory".



Connecting to your iPad - Apogee Quartet QuickStart Guide

The App Store will open and navigate automatically to the Apogee Maestro app.



4. Once you've signed in to the App Store, download Apogee Maestro.

Note: it's possible to record through the mic inputs and play back audio without installing Maestro

Connect to Headphones or Speakers

Connect headphones to the headphone output on the right side of Quartet.

Connect Quartet's 1/4" speaker outputs 1-2 to the inputs (balanced or unbalanced) of your studio monitors or amplifier.

Configuring the Input

Connect a microphone or instrument to one of the combo jacks on Quartet's rear panel

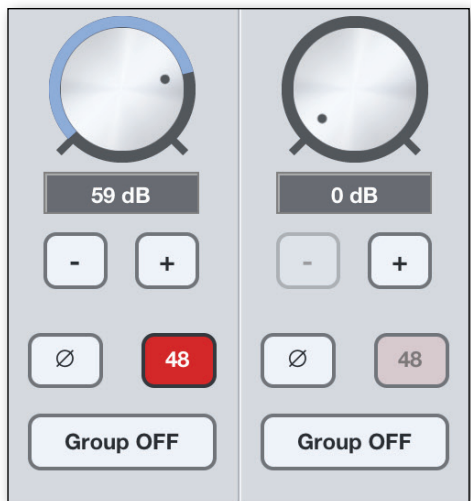


Connecting to your iPad - Apogee Quartet QuickStart Guide

Open Apogee Maestro app, choose Quartet from the main menu and select the Input tab.



Select the Analog Level setting that corresponds to the device you have connected to Quartet's input(s). For example, if you have an XLR microphone connected to input 1, select "Mic" from the Analog Level menu on channel 1.



48V Phantom power indicator on OLED Display

Note: If you are using a condenser microphone that requires phantom power, select the 48V box on the Input tab of the appropriate channel in Maestro. Phantom power is indicated on Quartet's display by a red dot above the microphone icon.

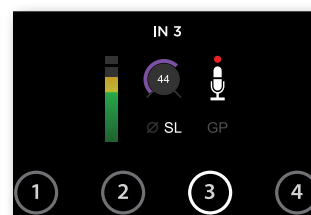
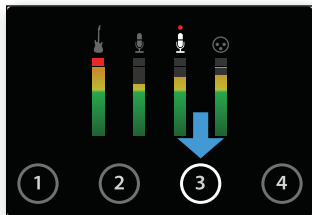
Adjusting Input & Output Levels

Input level

To change Quartet's input level (i.e the preamp gain of microphones and instruments):

1) Press the Touchpad corresponding to the desired input. The ring around the selected icon will be brighter than the others after you select it.

2) Turn the Controller Knob until the desired recording level is obtained.



The controller knob operates in parallel with Maestro's input controls.

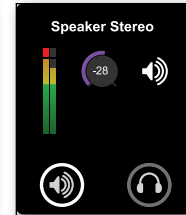
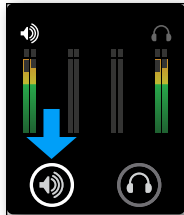
Speaker Output level

To change Quartet's speaker output level (i.e the listening level of connected speakers):

1) Press the speaker output Touchpad.

The ring around the selected icon will be brighter than the others after you select it.

2) Turn the controller knob to the desired listening level.



The controller knob operates in parallel with any software output controls.

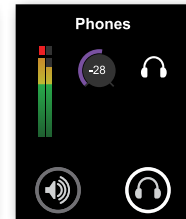
Headphone Output level

To change Quartet's headphone output level (i.e the listening level of connected headphones):

1) Press the headphone output Touchpad.

The ring around the selected icon will be brighter than the others after you select it.

2) Turn the controller knob to the desired listening level.



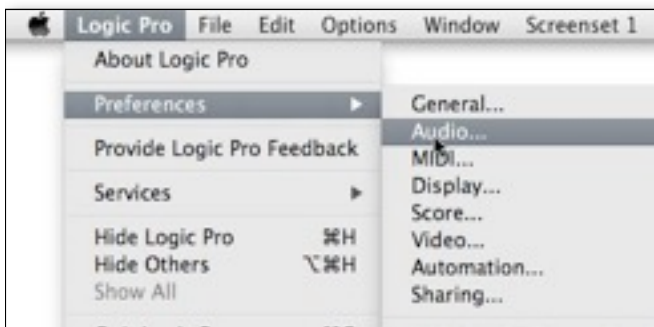
The controller knob operates in parallel with Maestro's headphone control.

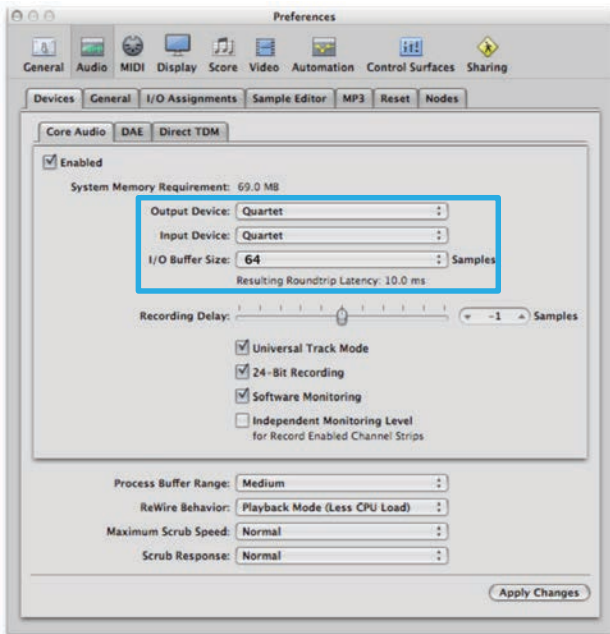
Software Setup

Mac OS: Using Quartet with Logic

1) Go to the Logic Pro or Logic Express menu and choose **Preferences > Audio**.

2) In the Core Audio pane of the Device tab, select Quartet for Output Device and Input Device.





3) Set the I/O Buffer Size to **64**. Click Apply Changes at the bottom of the Preferences window.

Mac OS: Using Quartet with Logic (continued)

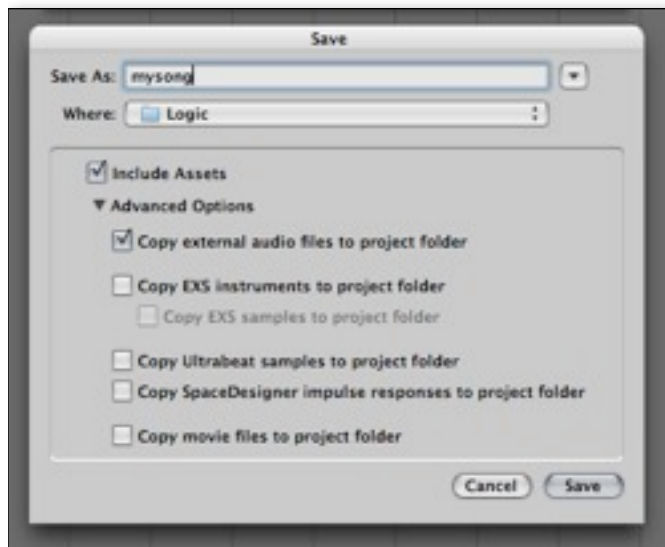
4) Now close the Logic Pro Preferences window and select **New > Empty Project >** from the File Menu.



5) If you are recording a single microphone or instrument, make the following selections in the New Tracks dialog box:



6) Logic will now ask you to name the project and save in on your hard drive.

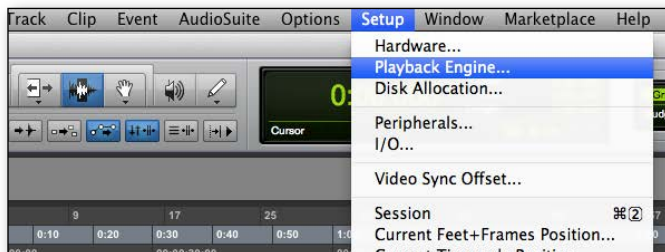


7) Click the Record button in the transport control at the bottom of the Logic window.

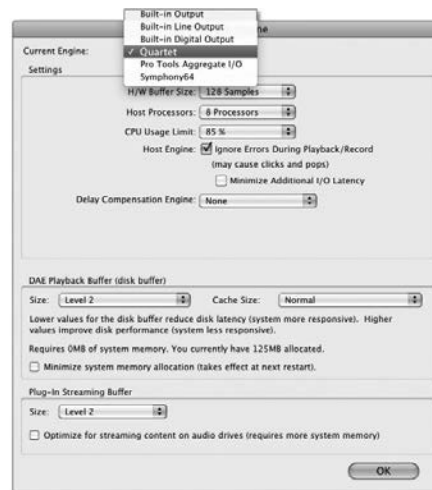


Mac OS: Using Quartet with Avid Pro Tools (9 or greater)

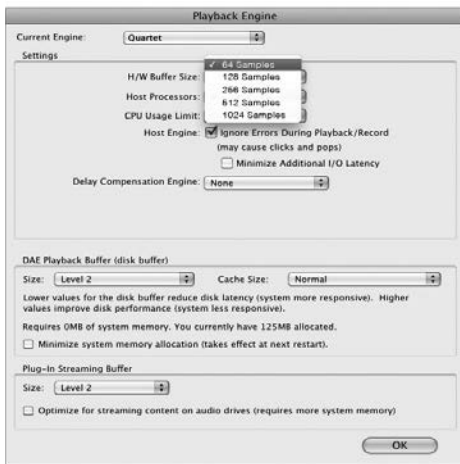
1) Choose **Setup** menu > **Playback Engine**.



2) Choose **Quartet** for **Current Engine**.



3) Set the Buffer Size to **64**. Click **OK**.



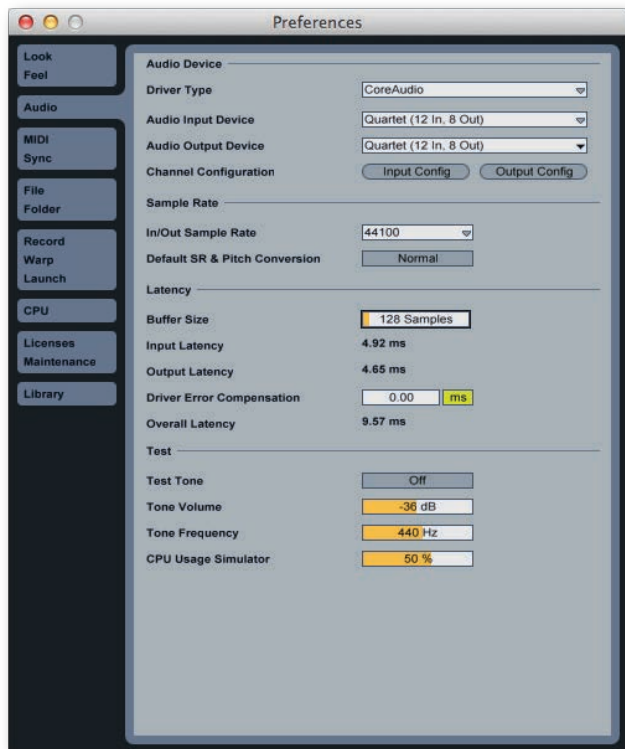
4) The following dialog box will appear. **Click Yes**.



Mac OS: Using Quartet with Ableton Live

- 1) **Choose Live > Preferences.** Click on the Audio tab.
- 2) Select CoreAudio in the Driver Type menu.
- 3) Select **Quartet** in both the Audio Input Device and Audio Output Device menus.
- 4) Set Buffer Size to 128
- 5) Close the Preferences window after making settings.

Software Setup - Apogee Quartet Quick Start Guide



Using Quartet with iOS Apps

Quartet works with any iOS Core Audio compatible app on iPod Touch, iPhone or iPad. Simply download your favorite app, connect Quartet and you're ready to go!

Recommended apps:

GarageBand - <https://itunes.apple.com/us/app/garageband/id408709785?mt=8>

Auria - <https://itunes.apple.com/us/app/auria/id524122834?mt=8>

Cubasis - <https://itunes.apple.com/us/app/cubasis/id583976519?mt=8>



Visit www.apogeedigital.com/knowledgebase
for the most up to date list of compatible apps

Additional Support

For more information:

- Complete Apogee Quartet User's Guide
- Apogee KnowledgeBase and FAQs
- Apogee Product Registration
- How to contact Apogee Technical Support

Visit: <http://www.apogeedigital.com/support/>



Designed in California. Made in U.S.A.

Apogee Electronics Corp. Santa Monica, CA

www.apogeedigital.com

Part #: 7010-0058-0160
Revision 2.0 (WEB)