

IMPORTANT SAFETY INSTRUCTIONS



1. Read these instructions.
2. Keep these instructions.
3. Heed all warnings.
4. Follow all instructions.
5. Do not use this apparatus near water.
6. Clean only with a dry cloth.
7. Do not block any ventilation openings.
8. Do not use near any heat sources such as radiator, heat registers, stoves or other apparatus (including amplifiers) that produce heat.
9. Only use attachments/accessories specified by the manufacturer.
10. Use only with the cart, stand, tripod, bracket or table specified by the manufacturer, or sold with the apparatus. When a cart is used, use caution when moving the cart/apparatus combination to avoid injury from tipping. 
11. Refer all servicing to qualified personnel. Servicing is required when the apparatus has been damaged in anyway, such as power-supply cord/plug damage, liquid has been spilled or objects have fallen into the apparatus, the apparatus has been exposed to rain or moisture, does not operate normally, or has been dropped.
12. Do not cover the dissipation heat sink. Leave space around the amplifier to ensure a good ventilation.
13. The apparatus should not be exposed to dripping or splashing and no objects filled with liquids, such as vases, should be placed on the apparatus.
14. No naked flame sources, such as lighted candles, should be placed on the apparatus.
15. Remove the battery during transportation.

See more with QR code:



ALLAROUND 4



ALLAROUND 8



ALLAROUND 10

QUICKSTART GUIDE

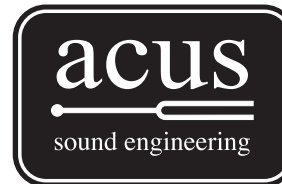
- ALLAROUND 4
- ALLAROUND 8
- ALLAROUND 10

ALLAROUND



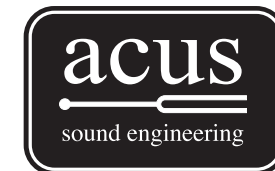
ALLAROUND

*is a product entirely
designed and produced in Italy
by*



ACUS SOUND ENGINEERING SRL

Via Cupa Madonna di Varano, 8 - 62019 Recanati (MC) - Italy
Tel. +39 071 9793109
www.acus-sound.it - info@acus-sound.it



MADE IN ITALY

Bluetooth name and logo are properties of their respective owners.
All brand name and trademarks are properties of their respective owners.

TOP SECTION



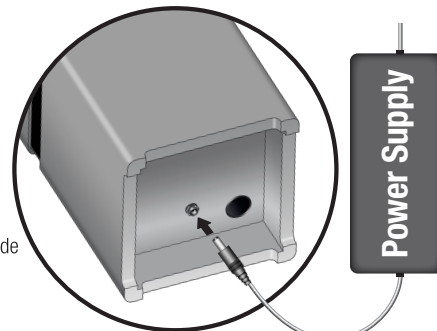
POWER SUPPLY

Is possible to power ALLAROUND with 2 types of source:

1. Power bank (not included): you can connect a power bank with a USB cable



2. External Power Supply (included): connect the power supply to the socket located on the underside of the ALLAROUND.



WARNING:

It is not possible to recharge the power bank with the amplifier power supply.

LED SECTION

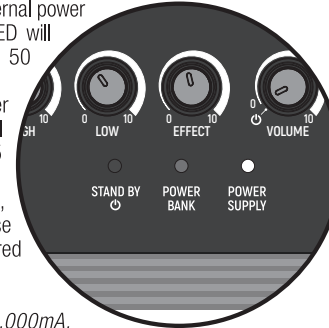
When the VOLUME is in the position, the system is in standby mode and the red STAND BY LED will light up.

The system will be active when the VOLUME knob is turned to at least 0.

If ALLAROUND is powered with the external power supply, the white POWER SUPPLY LED will light up and the system will deliver 50 Watts at maximum volume.

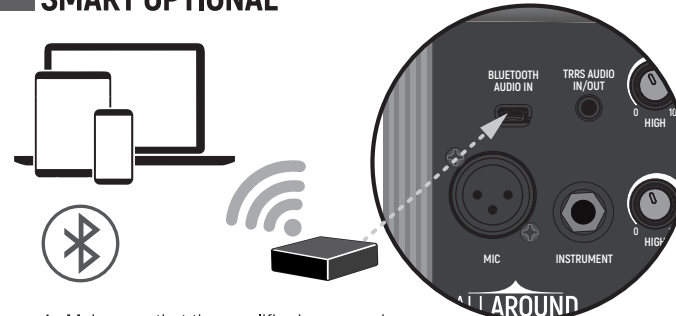
If ALLAROUND is powered by the power bank, the blue POWER BANK LED will light up and the system will deliver 15 Watts at maximum volume.

To put ALLAROUND in standby mode, turn the VOLUME knob anti-clockwise until it reaches the position, the red STAND BY LED will light up.



- Tips:**
- Use power banks of at least 5,000mA.
 - The duration of ALLAROUND operation with the power bank depends on the capacity of the power .

SMART OPTIONAL



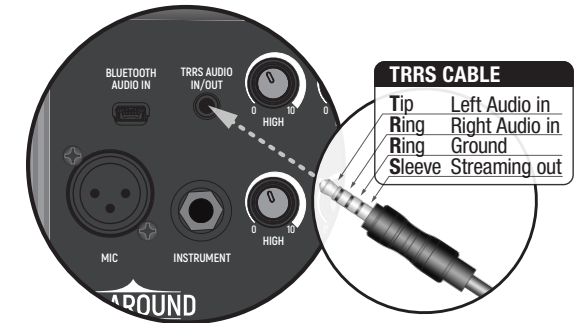
1. Make sure that the amplifier is powered off and connect the ACUS Artesia BT-1 Bluetooth Receiver to mini-USB AUX IN connector.
2. Turn the amplifier on. The ACUS Artesia BT-1 Bluetooth receiver's blue LED indicator lamp will flash quickly for about 5 seconds. It will then flash again every 7 seconds until it pairs successfully with your Bluetooth device.
3. After it has matched successfully, find ACUS Artesia BT-1 as an option on your Bluetooth Device's Settings and then select it to connect.
4. When the blue LED Indicator lamp on the ACUS Artesia BT-1 Bluetooth Receiver is ON steady with no flashing, then the two devices have been successfully connected.

TRRS AUDIO IN/OUT

Play audio from your phone, MP3 player, tablet or laptop through the ALLAROUND using a stereo 3.5mm AUX cable (not supplied). Adjust your device's volume to match that of your acoustic guitar to enable you to play along.

Use your ALLAROUND as an interface to play, live stream, practice and record on your mobile device. Unlike a standard audio 3.5mm TRS jack that only allows audio to be sent from your device, (e.g. to your headphones), the TRRS

jack on your ALLAROUND allows audio to be sent and received at the same time. This allows you to playback audio from your device and send audio to your device from your ALLAROUND. This feature allows you to use apps such as GarageBand and Instagram live with a single cable.



TRRS CABLE	
Tip	Left Audio in
Ring	Right Audio in
Ring	Ground
Sleeve	Streaming out

To use your ALLAROUND amplifier as your Livestream Interface:

1. Connect your TRRS cable to your amplifiers TRRS AUDIO IN/OUT socket (see diagram above).
2. Connect the opposite end of the TRRS cable to your devices 3.5mm input.

NOTE: Apple iPhone / Tablet users: To connect to your mobile device, use a Lightning to 3.5mm adaptor (It is advised to use an official Apple manufactured cable / Adaptor for guaranteed compatibility)

3. Open an Audio recording software or Camera application on your phone.
4. Press record to test your levels are loud and clear. Use the channel 'Gain' controls on your amplifier to set the level sent to your phone.
5. Test and adjust your channel controls and effects for optimum sound on your amplifier.
6. Record high quality videos, audio memos and livestream (direct to Instagram Live, Facebook, YouTube, Twitch and more) straight from your amplifier.

DATA SHEET

	ALLAROUND 4	ALLAROUND 8	ALLAROUND 10
Height:	38,5	54,5	60,5
Width:	15,6	22	27
Depth:	15,6	22	27
Weigh:	3,9 Kg	7,3 Kg	10 Kg
Coaxial Speaker	SPL 87dB	SPL 91dB	SPL 95dB
2 way of power	External power supply 24V DC (Included) Standard power bank 5V		
Output power	50 WATT Rms with power supply 15 W Rms with power bank		
One channel for instrument and microphone	Two bands EQ - Reverb effects		
One aux channel for trrs in/out and audio bluetooth	Two bands EQ - Volume		
Main Volume	With STAND-BY control		
Bluetooth receiver	Included		

ALLAROUND